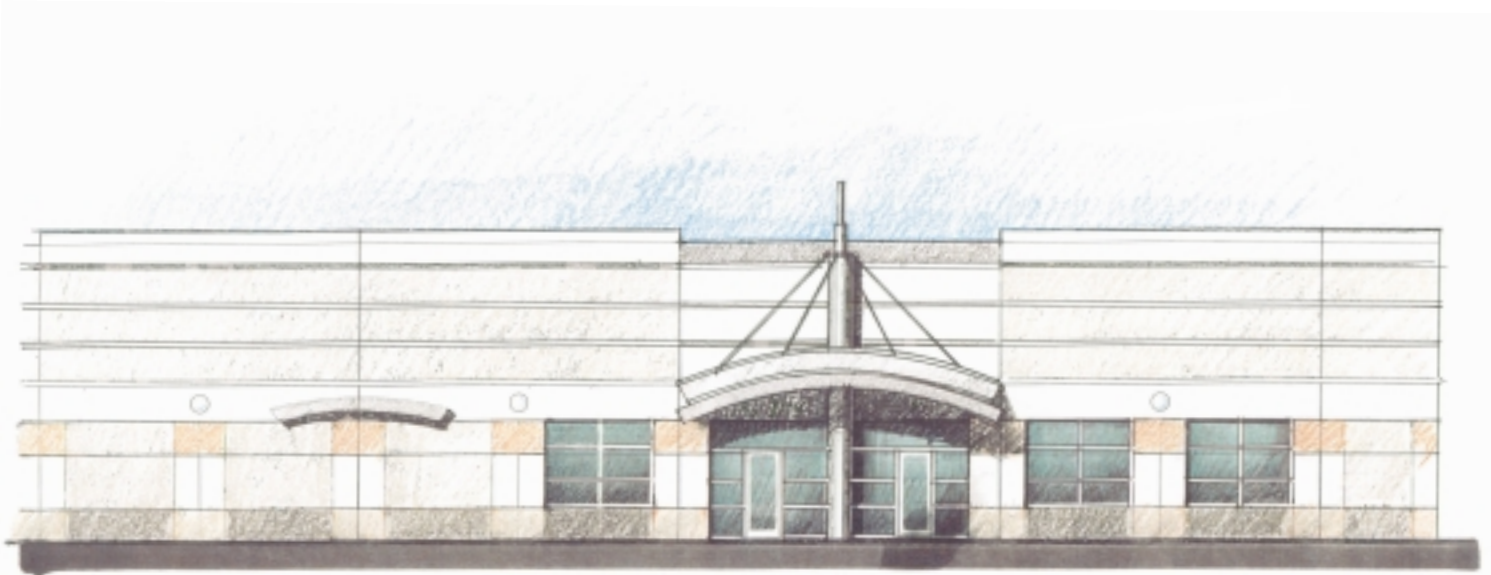


WorldPort at DIA



Building 11 - 61,000 SF Denver, Colorado



24557 E. 75th Ave., Denver, Colorado

Address: 24557 E. 75th Ave.
City & County: Denver/Denver
Size: 61,000 SF
Divisibility: 2,500 SF
Clearance: 16' minimum
Loading: 20 existing dock-high doors (9x10')
12 future dock-high doors (9'x10')
Drive-in doors possible
Offices: To suit
Parking: 124 spaces plus 6 HC spaces
Sprinkler System: ESFR System
Lighting: Metal Halide
Power: 800 amps
277/480 volts
3 phase, 4 wire

Other Features:

- * Large truck courts
- * Direct aircraft access with tug and cart
- * High image design
- * Front park/rear loading
- * Highway access and visibility from Peña Blvd.
- * South facing dock doors
- * Air freight, aviation, warehouse distribution, flex, office space
- * Foreign trade zone possible



Please Contact:

Mike Wafer
303.572.5564

mike.wafer@grubb-ellis.com

Murray Platt
303.572.5569

murray.platt@grubb-ellis.com

Grubb & Ellis Company
1200 17th Street, Suite 2000 Denver, CO 80202 303.572.7700 303.572.7722 FAX www.grubb-ellis.com

This statement with the information it contains is given with the understanding that all negotiations relating to the purchase, renting or leasing of the property described above shall be conducted through this office. The above information, while not guaranteed, has been secured from sources we believe to be reliable.

WorldPort at DIA

Building 11 - 61,000 SF

